

Three Time Bourées

Prends Garde Au Loup - tune: 1

Musical notation for the first tune of 'Prends Garde Au Loup'. It consists of two staves of music in 3/8 time. The first staff starts with a treble clef and a key signature of one flat (Bb). The melody is written in eighth notes and quarter notes. The second staff starts at measure 10 and includes two first endings (1. and 2.) marked with repeat signs and first/second endings.

Prends Garde Au Loup - melodeon bass: 2

Musical notation for the melodeon bass of 'Prends Garde Au Loup'. It consists of two staves of music in 3/8 time. The first staff starts at measure 19 and the second staff starts at measure 28. The bass line is written in eighth notes and quarter notes. The second staff includes two first endings (1. and 2.) marked with repeat signs and first/second endings.

Les Vignerons - tune: 3

trad

Musical notation for the third tune of 'Les Vignerons'. It consists of two staves of music in 3/8 time with a key signature of one sharp (F#). The first staff starts at measure 37 and includes guitar chords: G, G/B, C, D, G, G/B, C, D. The second staff starts at measure 45 and includes guitar chords: G, Bm7, Bm7, Am7, C, Bm7, D, G. The melody is written in eighth notes and quarter notes.

Les Vignerons - second line: 4

Musical notation for the second line of 'Les Vignerons'. It consists of two staves of music in 3/8 time with a key signature of one sharp (F#). The first staff starts at measure 53 and the second staff starts at measure 61. The melody is written in eighth notes and quarter notes.

Two Time Bourées

Carrée de Vouvray - tune: 1

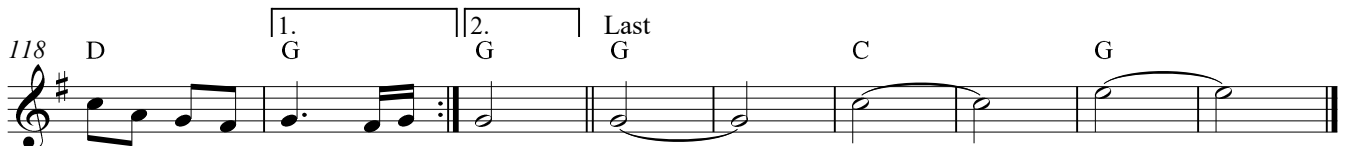
Gilles Chabenat



Carrée de Vouvray - D pipe harmony: 2



Bourée de Thiers - tune: 3



Bourée de Thiers - G pipes and concert harmony: 4



Waltz

Le Cordon Noir - G pipes and concerts tune: 1

Musical notation for the first part of the piece, starting at measure 158. It features a treble clef and a 3/4 time signature. The melody consists of eighth and quarter notes with various rests. There are first and second endings marked with '1.' and '2.' above the staff. The piece concludes with a 'Last' marking.

Le Cordon Noir - D pipe harmony: 2

Musical notation for the second part of the piece, starting at measure 158. It features a treble clef and a 3/4 time signature. The melody consists of eighth and quarter notes with various rests. There are first and second endings marked with '1.' and '2.' above the staff. The piece concludes with a 'Last' marking.

Le Cordon Noir - melodeon basses only: 3

Musical notation for the third part of the piece, starting at measure 187. It features a treble clef and a 3/4 time signature. The melody consists of quarter notes with various rests. There are first and second endings marked with '1.' and '2.' above the staff. The piece concludes with a 'Last' marking.

Schottische

Schottische à Virmoux - D pipe and concerts tune: 1

209 D G A D G D A D G A

215 D G D D G A D

220 G A D G A D A D

Schottische à Virmoux - D pipe chordal: 2

225

233

Schottische à Virmoux - concerts chordal: 3

241

249

Ganivelle - tune and chords: 4

Frederic Paris

G D G Am D G D G

263 1.C 2.C D C D G C D

270 G C D G Am C 1.D D 2.D D Last

Ganivelle - tune and harmony B part: 5

Frederic Paris

263 1. 2.

270 Last

Mazurka

L'inconnu de Limoise - G pipes and concerts tune:1

289

296

1. 2. AT CHANGE

Detailed description: This block contains the first two staves of music for 'L'inconnu de Limoise - G pipes and concerts tune:1'. The first staff starts at measure 289 and the second at 296. Both staves are in 3/4 time and feature a melody with eighth and sixteenth notes. The second staff includes first and second endings and ends with a double bar line and the text 'AT CHANGE'.

L'inconnu de Limoise - melodeon basses only: 2

303

311

Detailed description: This block contains the next two staves of music for 'L'inconnu de Limoise - melodeon basses only: 2'. The first staff starts at measure 303 and the second at 311. Both staves are in 3/4 time and feature a simple bass line with quarter and half notes.

Waterlilly - Tune: 3

Paddy Shaw

Em D D7 G Em D

325

331

G C D D7

1. 2. G G

Detailed description: This block contains three staves of music for 'Waterlilly - Tune: 3'. The first staff starts at measure 325 and the second at 331. The music is in 3/4 time with a key signature of one sharp (F#). Chord symbols (Em, D, D7, G, C) are placed above the notes. The second and third staves include first and second endings.

Waterlilly - G pipes harmony: 4

346

1. 2.

Detailed description: This block contains two staves of music for 'Waterlilly - G pipes harmony: 4'. The first staff starts at measure 346. The music is in 3/4 time with a key signature of one sharp. Both staves include first and second endings.

Waterlilly - concerts harmony: 5

355

364

1. 2.

Detailed description: This block contains two staves of music for 'Waterlilly - concerts harmony: 5'. The first staff starts at measure 355 and the second at 364. The music is in 3/4 time with a key signature of one sharp. Both staves include first and second endings.

Prends Garde Au Loupe & Les Vignerons

	Prends Garde Au Loupe			
Times	1st	2nd	3rd	4th
D Gurdy	1 + Tr	1 + Tr	1 NO Tr	1 + Tr
G Gurdy	out	1 + Tr	1 NO Tr	1 + Tr
Melodeon	out	out	2	2
Concert	out	out	out	out
G Pipe	out	1	1	1
D Pipe	out	1	1	1

	Les Vignerons				
Times	1st	2nd	3rd	4th	5th
D Gurdy	Clap/Stamp	Stamp	3 + Tr	3 + Tr	3 + Tr
G Gurdy	Clap/Stamp	Stamp	4+ Tr	4 + Tr	3 + Tr
Melodeon	Clap/Stamp	3 No Chords	3 + Chords	3 + Chords	3 + Chords
Concert	3	3	4	4	3
G Pipe	Clap/Stamp	Stamp	4	4	3
D Pipe	Clap/Stamp	Stamp	3	3	3

Carrée de Vouvray & Bourrée de Thiers

	Carrée de Vouvray			
Times	1st	2nd	3rd	4th
D Gurdy	1 + Tr	1 NO Tr	1 + Tr	1 + Tr
G Gurdy	out	out	out	out
Melodeon	out	out	out	out
Concert	out	1	2	1
G Pipe	out	out	out	out
D Pipe	out	2	2	1

	Bourrée de Thiers				
Times	1st	2nd	3rd	4th	5th
D Gurdy	3 + Tr	3 + Tr	Drone NO Tr	3 + Tr	3 + Tr
G Gurdy	out	out	4 NO Tr	4 + Tr	4 + Tr
Melodeon	Chords (Bourrée Beat)	Chords (Bourrée Beat)	3 + Chords (Smooth)	3 + Chords	3 + Chords
Concert	3	3	3	4	3
G Pipe	out	out	4	4	4
D Pipe	3	3	3	3	3

Le Cordon Noir

	Le Cordon Noir				
Times	1st	2nd	3rd	4th	5th
D Gurdy	1 (No Drone)	1 (No Drone)	1 + Drone	1 + Drone	1 + Drone
G Gurdy	1	1	1 (No Drone)	out	1 + Drone
Melodeon	out	out	D Drone	3 (No chords!)	3 (No chords!)
Concert	out	out	1	1	1
G Pipe	1	1	1 (No Drone)	out	1 + Drone
D Pipe	Out	Drone Only	2	2	2

Schottische à Virmoux & Ganivelle

	Schottische à Virmoux			
Times	1st	2nd	3rd	4th
D Gurdy	1 + Tr	1 + NO Tr	1 + Tr	1 + Tr
G Gurdy	out	out	out	out
Melodeon	1 + chords	1 + chords	1 + chords	1 + chords
Concert	out	3	3	1
G Pipe	out	out	out	out
D Pipe	out	2	2	1

	Ganivelle				
Times	1st	2nd	3rd	4th	5th
D Gurdy	out	4 NO Tr	4 + Tr	4 + Tr	4 + Tr
G Gurdy	4	4	4	4	4
Melodeon	4 + chords	4 + chords	4 + chords	Chords Only	4 + chords
Concert	out	out	5	4	5
G Pipe	4	4	4	4	4
D Pipe	out	4	5	4	5

L'Inconnu de Limoise & Waterlily

	L'Inconnu de Limoise		
Times	1st	2nd	3rd
D Gurdy	out	out	out
G Gurdy	1 + Tr	1 + Tr	1 + Tr
Melodeon	out	out	2
Concert		2 (B part)	2
G Pipe	1	1	1
D Pipe	out	out	out

	Waterlily			
Times	1st	2nd	3rd	4th
D Gurdy	out	3 NO Tr	3 NO Tr	3 NO Tr
G Gurdy	out	out	4 NO Tr	4 NO Tr
Melodeon	3 + Chords	Basses only	Chords/Basses	3 + Chords
Concert	3	5	5	3
G Pipe	out	out	4	4
D Pipe	3	3	3	3